



WESTERN SCALE CO. LTD.

Western Scale Co. Ltd.
1670 Kingsway Ave.
Port Coquitlam, B.C.
Canada V3C 3Y9

Tel: 1.604.941.3474
Fax: 1.604.941.4020
Email: info@westernscale.ca
Web: www.westernscale.ca

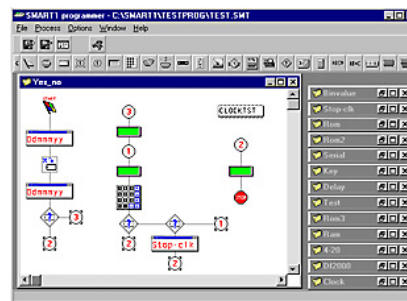
SMART1 SCALE MICROCONTROLLER

Scale Microcontroller And Remote Terminal

An easily programmable device that performs a wide variety of duties for weighing applications including: Data Management, Communications, Calculations, and I/O.

FEATURES

- 5 Bi-directional, fully configurable serial ports
- 1 I/O expansion terminal
- Easy to read LCD display
- Compatible with any scale indicator
- Easy to learn and use graphical programming software. Great for novices and professionals
- 32 KB of program memory
- 32 KB of file storage memory
- Real-time clock
- Control Output Relays, Remote Inputs, and Analog Outputs
- Perform Arithmetic, Assign Variables, Create Data files, Print Custom Tickets, etc.
- Create your own custom scale systems
- Ideal for: Truck In/Out, Batching, Unattended Systems, and more...
- Available in a variety of enclosure models to suit any environment.
- Pre-installed factory programs and custom systems are available. Please call for more details.
- **NEW!** Optional USB Port upgrade for increased memory and functionality!



Desktop SMART1 & Programmer Screen shot

SPECIFICATIONS

DISPLAY

- LCD Screen with LED backlight
- 4 rows of 20 characters
- 0.25" (6mm) character height
- 4 annunciator lights (GR, NT, lb, kg)

KEYPAD

- 16 buttons – Alphanumeric
- Snap dome membrane

COMMUNICATIONS

- RS 232. Fully Configurable
- Command mode for custom strings

POWER REQUIREMENTS

- 9VDC, 800mA
- Power supply: 120VAC 60Hz 16W

PROGRAMMING LANGUAGE

- Free PLAIN programming language, developed for Weighing Industry Users

DIMENSIONS

- 9.75 x 6 x 2.5 inches (25x15x6cm)

WEIGHT

- Desktop Enclosure: 2.5 lb (1 kg)

OPERATING TEMPERATURE

- 32°F to 104°F (0°C to 40°C)

WARRANTY

- 2 year standard warranty