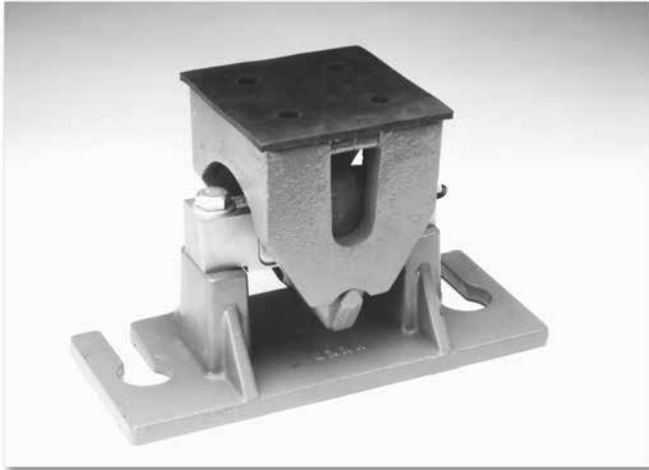


TSA Truck Scale Assembly



Mount only; does not include load cell

Picture is a representation of actual product

The TSA truck scale assembly is designed for use with Rice Lake Weighing Systems RL75058 or Vishay Sensortronics 65058. The “Unilink” suspension design checks lateral movement of the assembly, while controlled floating of the scale deck is allowed.

The effective integration of the TSA mount and the double-ended shear beam load cell eliminates the need for troublesome check rods, links, expansion assemblies and other peripheral hardware.

APPLICATIONS

- Truck, track, horizontal tank or general purpose
- Light-duty livestock to heavy-duty vehicle scales

STANDARD FEATURES

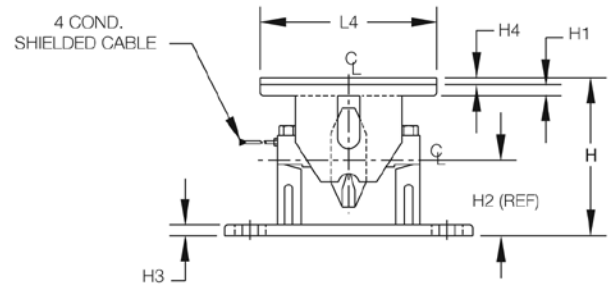
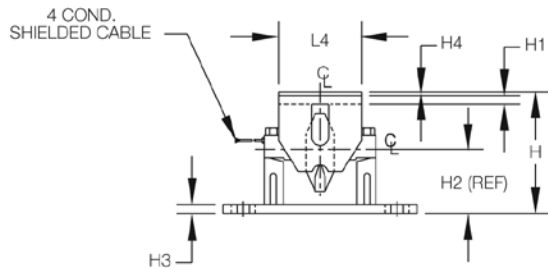
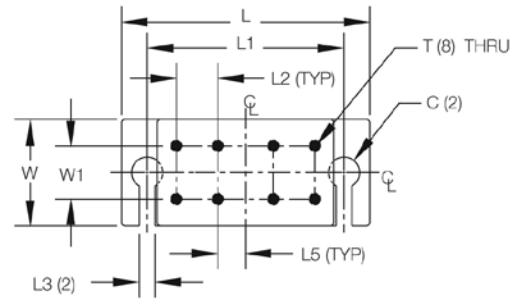
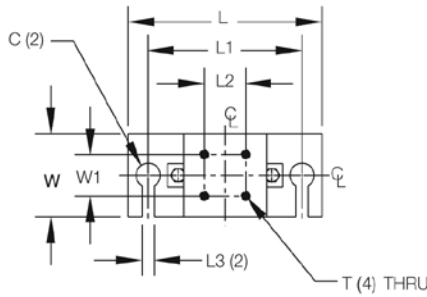
- Capacities: 10,000-75,000 lb (4535.9-34,019.4 kg)
- Constructed of cast steel and iron with primer coating
- Unique high-performance “Unilink” suspension system
- Center-loaded double-ended shear beam design
- Self-checking design
- Rubber pad provided for mounting

OPTIONAL FEATURES

- 20,000-75,000 lb (9071.9-34,019.4 kg) capacity NTEP Certified load cells available for 1:10,000d, Class III L

NOTE: Check with your local weights & measure officials for suitability in Legal for Trade applications.

TSA Truck Scale Assembly



DIMENSIONS

| RATED CAPACITY | C | H | H1 | H2 | H3 | H4 | L | L1 | L2 | L3 | L4 | L5 | T | W | W1 |
|-------------------|-----------|-------|------|-------|------|------|-------|-------|------|------|-------|------|---------------|-------|------|
| lb/inches | | | | | | | | | | | | | | | |
| 10,000-25,000 | 1.75 DIA. | 8.75 | .62 | 4.62 | .62 | .25 | 14.00 | 11.00 | 3.00 | .88 | 6.00 | — | 5/8-11 UNC-2B | 6.00 | 3.00 |
| 50,000-75,000 | 2.00 DIA. | 11.00 | .75 | 5.44 | .75 | .50 | 18.00 | 14.00 | 3.00 | .88 | 12.75 | 2.00 | 3/4-10 UNC-2B | 7.00 | 3.50 |
| kg/mm | | | | | | | | | | | | | | | |
| 4535.9-11,339.8 | 44.5 DIA. | 222.3 | 15.7 | 117.3 | 15.7 | 6.4 | 355.6 | 279.4 | 76.2 | 22.4 | 152.4 | — | 5/8-11 UNC-2B | 152.4 | 76.2 |
| 22,679.6-34,019.4 | 50.8 DIA. | 279.4 | 19.1 | 138.2 | 19.1 | 12.7 | 457.2 | 355.6 | 76.2 | 22.4 | 323.9 | 50.8 | 3/4-10 UNC-2B | 177.8 | 88.9 |

ORDER INFORMATION

| LOAD RATING (PER MODULE) | PART # | PRICE |
|---|--------|---------|
| 10,000-20,000-25,000 lb (4535.9-9071.9-11,339.8 kg) | 17821 | Consult |
| 50,000-60,000-75,000 lb (22,679.6-27,215.5-34,019.4 kg) | 17822 | Consult |

*Mount only; does not include load cell

See page 315-316 for Vishay Sensortronics load cell model 65058 specifications

See page 151 for Rice Lake Weighing Systems load cell model RL75058 specifications

See page 152 for welded-seal RL75060S cell

WEIGH MODULES